

CUSTOMER COPY

REV.	DESCRIPTION	APP.	DATE
A	NEW DESIGN	Amos	2013-11-08

RoHS

ORDER INFORMATION

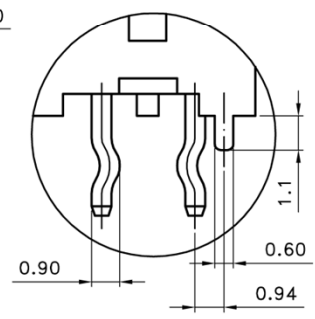
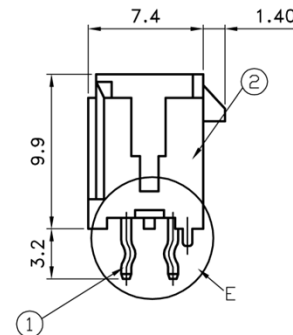
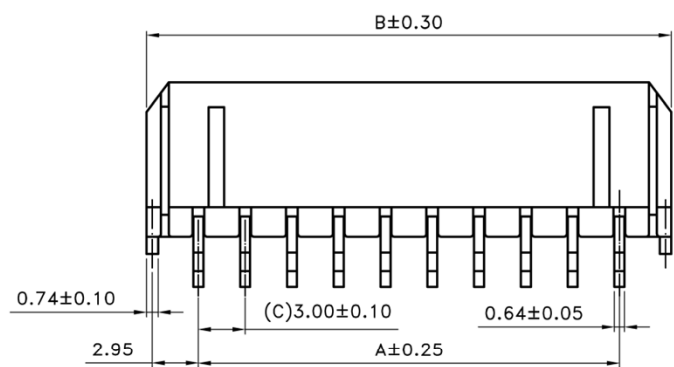
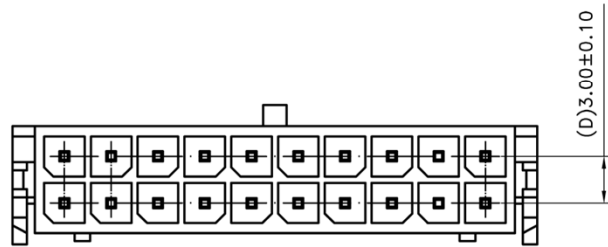
12450 X 0 XX X

1:Plating Tin
3:Plating Gold Flash

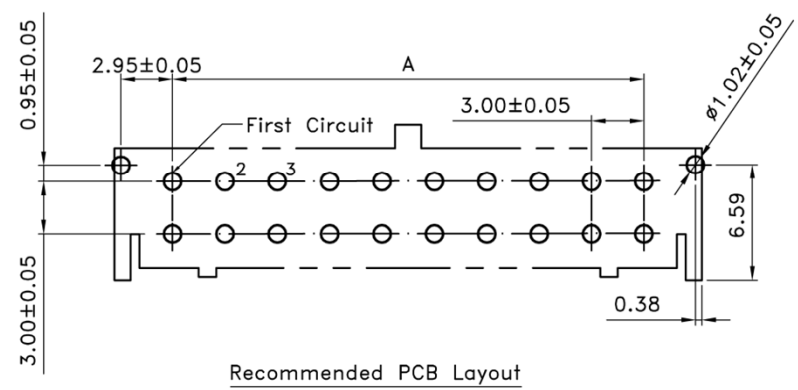
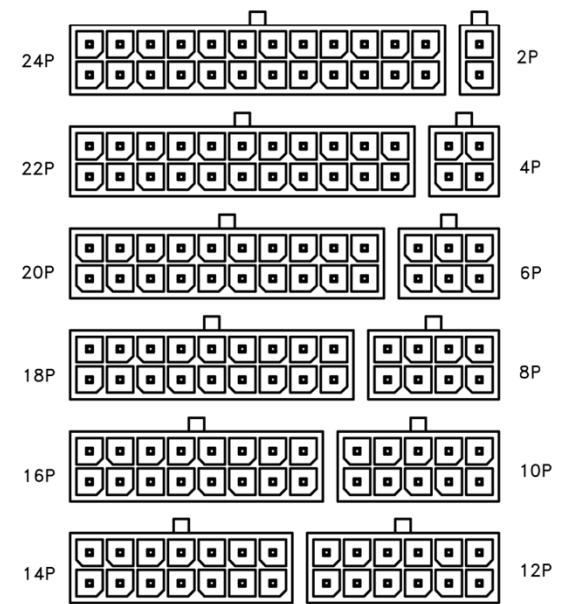
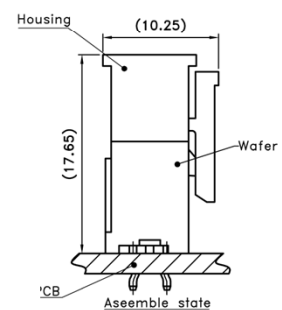
No. of Contact

180° Type

Poles	Dimensions(mm)		Poles	Dimensions(mm)	
	A	B		A	B
2		6.85	14	18.00	24.85
4	3.00	9.85	16	21.00	27.85
6	6.00	12.85	18	24.00	30.85
8	9.00	15.85	20	27.00	33.85
10	12.00	18.85	22	30.00	36.85
12	15.00	21.85	24	33.00	39.85



Detail E
SCALE 2:1



Recommended PCB Layout

■ SPECIFICATIONS

- Current Rating : 5A AC/DC
- Withstanding Voltage : 1,500V AC/minute
- Insulation Resistance : 1,000M Ω min
- Temperature Range : - 25 °C ~ + 105 °C
- Contact Resistance : 20m Ω max

■ WAFER

- Part No. : JS-3026-XX
- Poles : 2 - 24(Double Row, Straight)
- Material : 1.Contact : Brass , Sn100u" over Plated ; Nickel 30u" under all over
2.Base : Polyamide 6T/66 +30 % Glass Fiber ; UL94V-0
- Q' ty : 2P-12P : 1,000 pcs./Bag
14P-24P : 500 pcs./Bag

 鈺滿榮企業股份有限公司 ACMELUX CO., LTD.
TEL:886-2-85124595 FAX:886-2-85124322

0.0±0.30	SCALE: 1:1	TITLE:	PART NO:
0.00±0.20	UNIT: mm	Pitch 3.0mm 180° Type Wafer Connector	APP BY: <i>Hung</i>
0.000±0.1			CHK BY: <i>Cheryl</i>
MATERIAL: RoHS		DWG. NO. C12450X0XXX	DR BY: <i>Amos</i>

